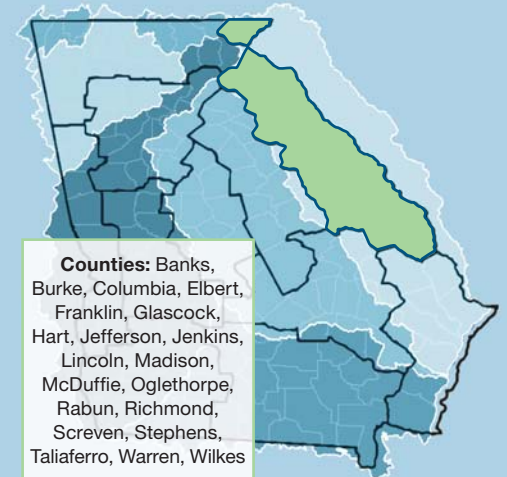


SAVANNAH-UPPER OGEECHEE REGION

BACKGROUND

The 2004 Comprehensive State-wide Water Management Planning Act authorized the development of the State Water Plan. The State Water Plan, which was adopted by the General Assembly in 2008, calls for:

- the preparation of regional water plans;
- the establishment of ten regional water planning councils to prepare the plans; and,
- the Georgia Environmental Protection Division (EPD) with providing technical assistance to the councils including contractor support, guidance, resource assessments and forecasts.

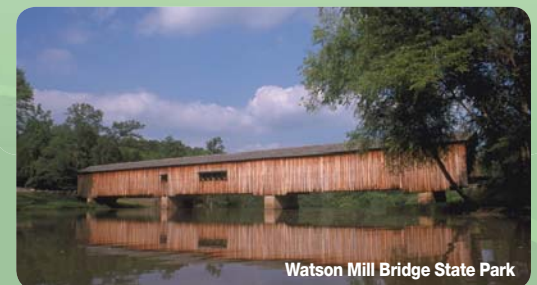


COUNCIL ACTIVITIES, 2009-2011

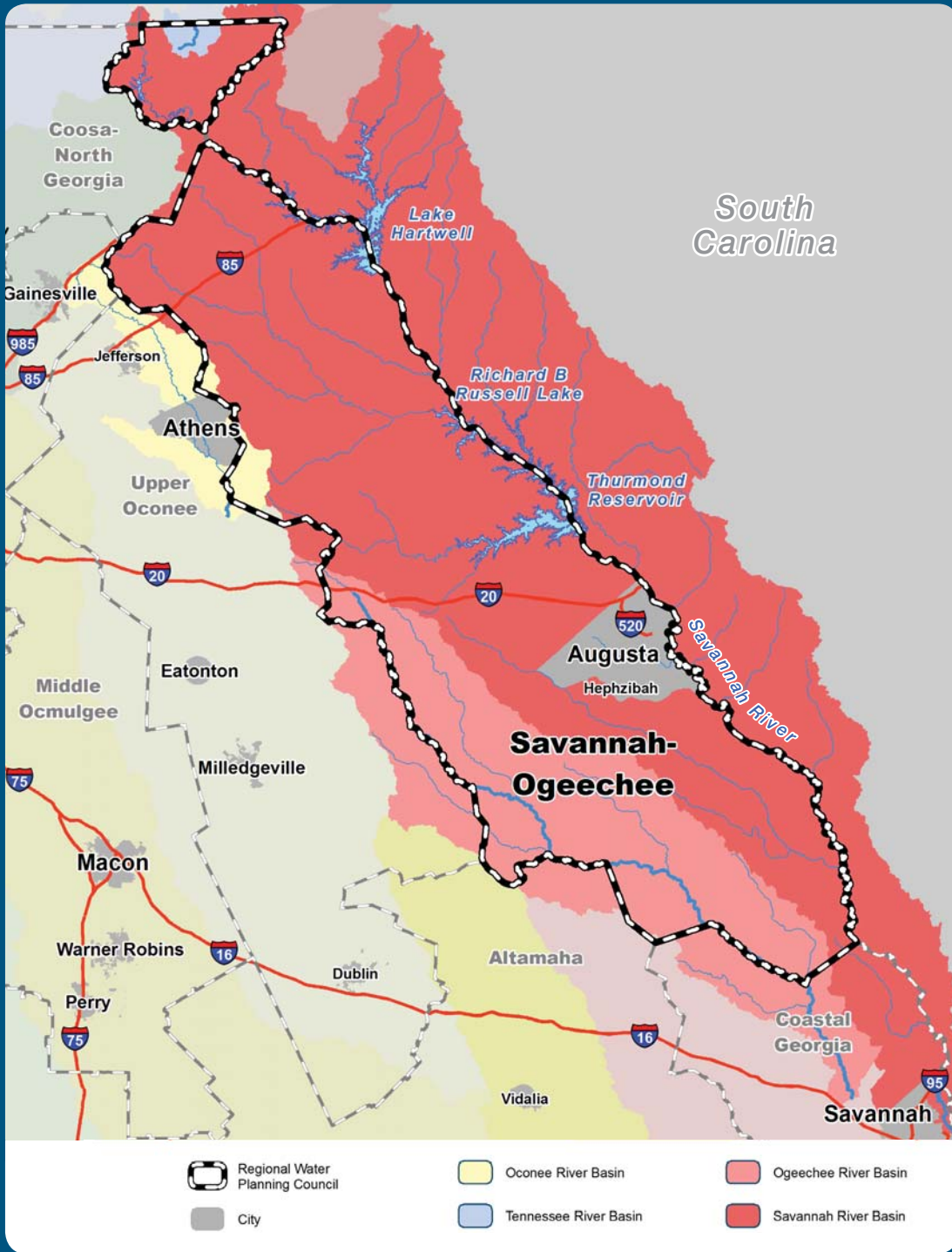
ACTIVITY	STATUS
Council Meetings	5 in 2009 / 4 in 2010 / 2 in 2011
Council Leadership	Ron Cross, Chair and Charlie Newton, Vice Chair
Memorandum of Agreement	Executed with Department of Community Affairs and EPD
Vision and Goals	Adopted
Public Involvement Plan	Adopted
Subcommittees	Technical Committee, Plan Review Committee, Interstate Coordination Committee
Draft Water Resource Assessments	EPD presented, January 2010
Draft Water and Wastewater Demand Forecasts	EPD presented, March-June 2010
Management Practices	Select, evaluate, refine, finalize, June 2010-May 2, 2011
Initial Recommended Regional Water Plan	Submit to EPD, May 2, 2011
Address Public Comments	Review and revise based on public comments received
Final Recommended Regional Water Plan	Submit to EPD Director for adoption, September 30, 2011

KEY WATER RESOURCE ISSUES BEING ADDRESSED BY THE COUNCIL

1. Low dissolved oxygen levels in the Savannah River and Harbor and the sharing of a substantially reduced assimilative capacity between Georgia and South Carolina dischargers
2. Coordination with South Carolina on shared water resources in the Savannah Basin
3. Gaps in surface water availability during drought conditions in the Ogeechee Basin
4. Concerns about interbasin transfers of water out of the Savannah Basin
5. Long-term operating procedures at the US Army Corps reservoirs and the use of adaptive management to maintain conservation pools at the highest possible levels
6. More efficient use of water in the region



KEY WATER FEATURES OF THE SAVANNAH-UPPER OGEECHEE REGION



SAVANNAH-UPPER OGEECHEE COUNCIL MEMBERS

- BRUCE AZEVEDO**
Colbert, Madison County
- BRAYE C. BOARDMAN**
Augusta, Richmond County
- JERRY L. BOLING**
Homer, Banks County
- CHARLES CAWTHON**
Lavonia, Franklin County
- DEKE COPENHAVER**
Augusta, Richmond County
- BARRY W. CRONIC**
Canon, Franklin County
- RON C. CROSS**, Chair
Evans, Columbia County
- DONALD E. DYE**
Toccoa, Stephens County
- MIKE ESKEW**
Washington, Wilkes County
- DAN T. FOWLER**, Alternate
Wrens, Jefferson County
- PATRICIA T. GOODWIN**, Alternate
Evans, Columbia County
- PATRICK D. GORAN**, Alternate
Hartwell, Hart County
- LARRY GUEST**
Elberton, Elbert County
- TOYE HILL**
Lincolnton, Lincoln County
- ROBERT JENKINS**
Millen, Jenkins County
- THOMAS C. JORDAN**
Louisville, Jefferson County
- SCOTT P. MACGREGOR**
Augusta, Richmond County
- EDDIE MADDEN**
Elberton, Elbert County
- CHRIS McCORKLE**
Dearing, McDuffie County
- TIM MCGILL**
Martinez, Columbia County
- JAMES H. NEWSOME**
Warrenton, Warren County
- CHARLES G. NEWTON**, Vice
Chair Thomson, McDuffie County
- LEWIS P. SANDERS**
Stephens, Oglethorpe County
- STAN SHEPPARD**
Sylvania, Screven County
- LARRY S. WALKER**
Lakemont, Rabun County
- R. LEE WEBSTER**
Waynesboro, Burke County
- TOM WIEDMEIER**
Augusta, Richmond County
- TENIA S. WORKMAN**
Hartwell, Hart County
- REP. TOM MCCALL**
(Ex-Officio)
- SEN. RALPH HUDGENS**
(Ex-Officio)

CURRENT WATER DEMAND

TOTAL = 320 MGD

Note: For 2005 the Savannah-Upper Ogeechee region total thermoelectric water demands were 64 MGD and total returns were 21 MGD.

